



**PRINCESS SPAS®**

*swim • spa • relax*



Spa Brochure





## CONTENTS

	Page		Page
Spa Health Benefits	3	Model PR5 6 Seats	12
Quality Assured & Shell/Cabinet Colours	4	Model PR6 6 Seats	13
Control System	5	Model PR7 5 Seats	14
Crystal Clear Water	6	Model PR8 3 Seats	15
Saving Energy	7	Model PR9 3 Seats	16
Model PR1 7 Seats (2 loungers)	8	Model PR10 6 Seats	17
Model PR2 7 Seats	9	Model PR11	18
Model PR3 7 Seats	10	PR11 Swim Spa	19
Model PR4 5 Seats	11	Contact Information	20

PR11 Swim Spa







## SPA HEALTH BENEFITS

---

You and your family will benefit from your new spa in all kinds of ways, for a start, you'll spend more time together and you'll probably find your friends visit more often as well!

Below are some health-related benefits, thanks to the healing powers of hot water and hydrotherapy jets.

**These include:**

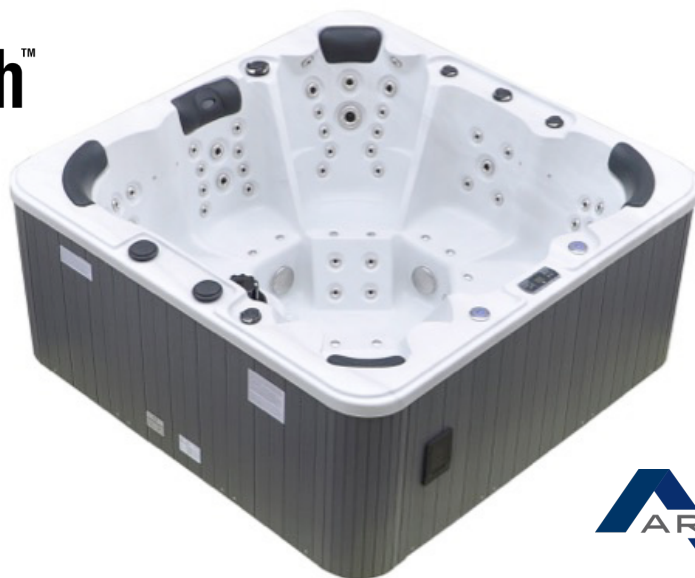
- Easing pain, fatigue and soreness
- Releasing endorphins, the body's natural pain killers
  - Speeding up recovery from injury
  - Combating insomnia and its effects
- Relieving stress, reducing muscle tension and anxiety
  - Improving mobility
- Helping relieve symptoms of arthritis and rheumatism
  - Helping reduce high blood pressure





## QUALITY ASSURED

Our Spas are designed to last a life time and only the very best materials are used in the build.



## SHELL & CABINET COLOURS

Shell



Ocean Blue



Marble



Midnight



Pearl

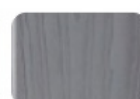


Emerald

Maintenance Free  
PVC Cabinet



Brown



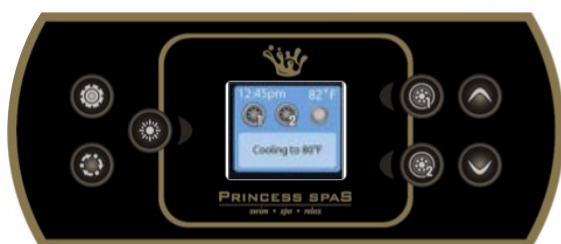
Grey





## CONTROL SYSTEM

Our spa control systems are made by the industry leaders, who are renowned for durability and reliability. Easy control functions with a simple touch panel, allow adjustments which include lights, jets, temperature etc. Or why not take control of your spa remotely by adding the WiFi In touch 2 and adjust your settings anywhere, any time.





## **CRYSTAL CLEAR WATER**

Our spas have a multi filtering system designed to improve your water quality.

Micro-fibre filters remove tiny particles to prevent cloudy water and an ozone generator produces ozone gas, that acts as a powerful oxidant helping to destroy bacteria and algae.



**CRYSTAL  
CLEAR WATER**



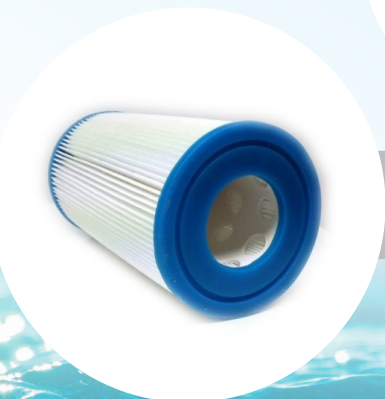
**OZONE  
GENERATOR**



**PUMP**



**HEATER**



**FILTER**



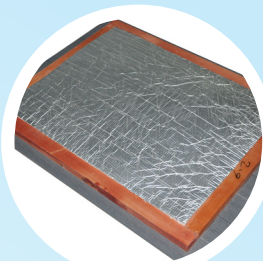


## SAVING ENERGY

Effective insulation is extremely important to keep running costs to a minimum. All of our Spas offer heat reflecting insulation that keeps the warm air inside and the cold air out, this is coupled with our energy efficient covers that will reflect the heat back into the water.



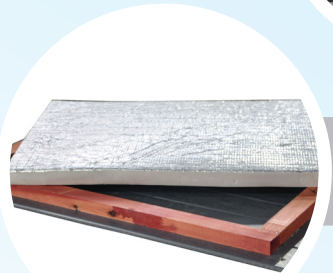
**ABS  
BASE**



**FOIL SKIRT  
INSULATION**



**BASE  
INSULATION**



**PU FOAM  
INSULATION**





## MODEL PR 1

7 SEATS (2 LOUNGERS) 2.4 x 2.4 x 0.93M

This large model packs more than enough power for the 7 seats with its 180 hydrotherapy jets. Seating is designed to immerse the bather into a luxurious massage to ease the strains of the day.

Technical Specifications	
Dimensions	2.4 x 2.4 x 0.93m
Seats	7 (2 Loungers)
Weight / Water Capacity	500 Kilos / 1650 litres
Shell / Structure	Aristech / Steel Framed
Electrics	43A / 240v
Heater	3 kw
Hydrotherapy Jets	180
Control System	Gecko YE5 in. K506
Circulation Pump	1 x 1 HP
Massage Pump	1 x 3 HP & 2 x 2 HP
Air Blower	400 watts
Lighting (7 Colour Changing)	1 Under Water & 32 Surface LED's
Waterfall	1 LED Lit
Fountains	2 LED Lit
Audio	Bluetooth & Pop Up Speakers
Ozone Generator	1
Headrests	4







## MODEL PR2

7 SEATS 2.03 x 2.03 x 0.92M

This unique model is compact to fit into most gardens but still comfortably seats 7. Designed with 96 hydrotherapy jets so the bather can truly experience luxurious massage experience.



### Technical Specifications

Dimensions	2.03 x 2.03x 0.92m
Seats	7
Weight / Water Capacity	300 Kilos / 1600 litres
Shell / Structure	Aristech / Steel Framed
Electrics	32A / 240v
Heater	3 kw
Hydrotherapy Jets	96
Control System	Gecko YE5 in. K506
Circulation Pump	1 x 1 HP
Massage Pump	1 x 3 HP & 2 x 2 HP
Air Blower	400 watts
Lighting (7 Colour Changing)	1 Under Water & 12 Surface LED's
Fountains	2 LED Lit
Audio	Bluetooth & Pop Up Speakers
Ozone Generator	1
Headrests	5





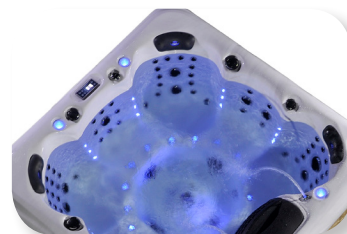
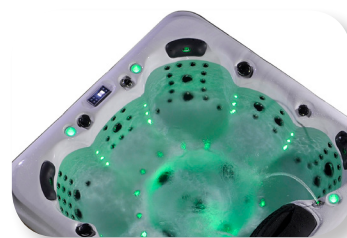
## MODEL PR3

7 SEATS 2.2 x 2.2 x 0.97M

This large 7 seat model comprises 109 stainless steel hydrotherapy jets providing different types of massage experiences. The 48 surface lights will truly amaze you, creating that fun and lively atmosphere.

### Technical Specifications

Dimensions	2.2 x 2.2 x 0.97m
Seats	7
Weight / Water Capacity	400 Kilos / 1400 litres
Shell / Structure	Aristech / Steel Framed
Electrics	32A / 240v
Heater	3 kw
Hydrotherapy Jets	109
Control System	Gecko YE5 in. K506
Circulation Pump	1 x 1 HP
Massage Pump	1 x 3 HP & 1 x 2 HP
Air Blower	400 watts
Lighting (7 Colour Changing)	1 Under Water & 48 Surface LED's
Fountains	2 LED Lit
Audio	Bluetooth & Pop Up Speakers
Ozone Generator	1
Headrests	4



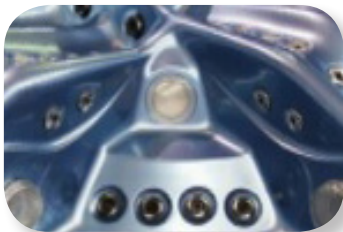




## MODEL PR4

5 SEATS, 2.1 x 2.0 x 0.95M

The curvaceous seats, combined with the jets and the loungers will create the finest massage and allow your entire body to unwind, loosen up and enter into a mode of complete relaxation and serenity.



### Technical Specifications

Dimensions	2.1 x 2.0 x 0.95m
Seats	5 (2 loungers)
Weight / Water Capacity	395 Kilos / 1100 litres
Shell / Structure	Aristech / Steel Framed
Electrics	32A / 240v
Heater	3 kw
Hydrotherapy Jets	95
Control System	Gecko YE5 in. K506
Circulation Pump	1 x 0.5 HP
Massage Pump	3 x 2 HP
Air Blower	700 watts
Lighting (7 Colour Changing)	25 Surface LED's
Audio	Bluetooth & Cabinet Speakers
Ozone Generator	1
Pillows	3





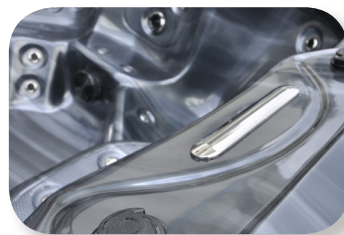
## MODEL PR5

6 SEATS, 2.2 x 2.2 x 0.93M

The ultimate party spa, fitted with a subwoofer so you can't just hear the music you will feel the music. Curvaceous seats to wrap the bather in a luxurious massage.

### Technical Specifications

Dimensions	2.2 x 2.2 x 0.93m
Seats	6 (1 Lounger)
Weight / Water Capacity	400 Kilos / 1500 litres
Shell / Structure	Aristech / Steel Framed
Electrics	32A / 240v
Heater	3 kw
Hydrotherapy Jets	69
Control System	Gecko YE5 in. K506
Circulation Pump	1 x 1 HP
Massage Pump	2 x 3 HP
Air Blower	400 watts
Lighting (7 Colour Changing)	Under Water & 8 Surface LED's
Waterfall	Yes LED Lit
Audio	Bluetooth, Subwoofer & Speakers
Ozone Generator	1
Pillows	3



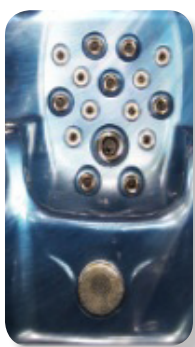




## MODEL PR6

6 SEATS, 2.3 x 2.3 x 0.97M

Designed for power the 150 carefully positioned hydrotherapy jets, combined with three 3-horsepower pumps achieve the ultimate rejuvenating massage.



### Technical Specifications

Dimensions	2.3 x 2.3 x 0.97m
Seats	6 (2 Loungers)
Weight / Water Capacity	445 Kilos / 1470 litres
Shell / Structure	Aristech / Steel Framed
Electrics	45A / 240v
Heater	3 kw
Hydrotherapy Jets	150 (includes 16 LED Lit Air Jets)
Control System	Gecko YE5 in. K506
Circulation Pump	1 x 0.5 HP
Massage Pump	3 x 3 HP
Air Blower	700 watts
Lighting (7 Colour Changing)	25 Surface LED's, 4 Cabinet LED's ,
Waterfall	1 LED Lit
Fountains	2 LED Lit
Audio	Bluetooth, Cabinet Speakers
Ozone Generator	1
Pillows	4





## MODEL PR7

5 SEATS, 2.0 x 2.0 x 0.91M

Ideal for families and couples designed with 2 loungers so that you can unwind and enjoy an invigorating massage comfortably in the twin loungers.

### Technical Specifications

Dimensions	2.0 x 2.0 x 0.91m
Seats	5 (2 Loungers)
Weight / Water Capacity	250 Kilos / 980 litres
Shell / Structure	Aristech / Steel Framed
Electrics	32A / 240v
Heater	3 kw
Hydrotherapy Jets	60
Control System	Gecko YE3 in. K300
Circulation Pump	1 x 0.35 HP
Massage Pump	1 x 3 HP
Air Blower	400 watts
Lighting (7 Colour Changing)	15 Surface LED's
Fountains	2 LED Lit
Audio	Bluetooth & Speakers
Ozone Generator	1
Pillows	3



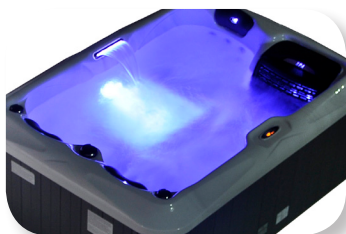
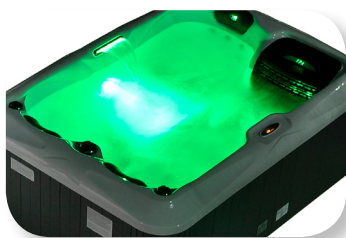




## MODEL PR8

3 SEATS (1 LOUNGER) 2.1 x 1.5 x 0.82M

Perfect size to fit nicely into any small garden but still spacious for a luxurious massage due to the curvaceous seats that fit to your body contour.



### Technical Specifications

Dimensions	2.1 x 1.5 x 0.82m
Seats	3 (1 Lounger)
Weight / Water Capacity	300 Kilos / 650 litres
Shell / Structure	Aristech / Steel Framed
Electrics	13A with Plug & Cable
Heater	2 kw
Hydrotherapy Jets	36
Control System	Gecko YJ-2/K300-1
Massage Pump	1 x 3 HP 2 Speed
Lighting (7 Colour Changing)	1 Under Water LED
Waterfall	1 LED Lit
Ozone Generator	1
Pillows	3





## MODEL PR9

3 SEATS (2 LOUNGERS) 2.0 x 1.6 x 0.85M

Ideal model for those with limited garden space, but still want that amazing spa experience. This model is feature packed offering 60 hydrotherapy jets, air blower, powerful pumps & waterfall with luxurious mood lighting.

### Technical Specifications

Dimensions	2.0 x 1.6 x 0.85m
Seats	3 (2 Loungers)
Weight / Water Capacity	250 Kilos / 1200 litres
Shell / Structure	Aristech / Steel Framed
Electrics	32A / 240v
Heater	3 kw
Hydrotherapy Jets	60
Control System	Gecko YE3 with in.K300
Circulation Pump	0.5 HP
Massage Pump	3 HP
Air Blower	400 watts
Audio	Bluetooth & Cabinet Speakers
Lighting (7 Colour Changing)	1 Under Water LED
Waterfall	1 LED Lit Pop-Up
Ozone Generator	1
Pillows	2







## MODEL PR10

6 SEATS (1 LOUNGER) 2.0 x 2.0 x 0.92M

Fitted with the very latest technology and eco energy insulation, this is an ideal family plug and play model. A total of 37 stainless steel massage jets provide an unrivalled massage and hydrotherapy experience for a hot tub this size.



Technical Specifications	
Dimensions	2.0 x 2.0 x 0.92m
Seats	6 (1 Lounger)
Weight / Water Capacity	350 Kilos / 1100 litres
Shell / Structure	Aristech / Steel Framed
Electrics	13A with Plug & Cable
Heater	2 kw
Hydrotherapy Jets	37
Control System	Gecko YE3 with in.K300
Circulation Pump	0.5 HP
Massage Pump	3 HP
Audio	Bluetooth & Cabinet Speakers
Lighting (7 Colour Changing)	19 Surface LED's
Ozone Generator	1
Pillows	3

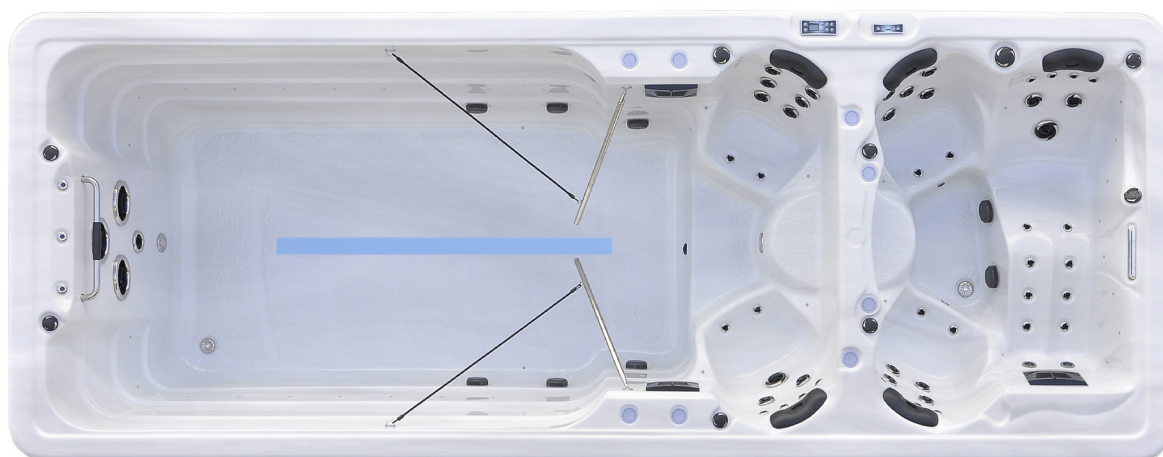




## MODEL PR 1 1

5.85 x 2.25 x 1.47M

Experience the benefits of aquatic exercise with our Swim Spa Range. Equipped with the very latest design jets and state of the art control systems these spas are the perfect place for relaxation and personal exercise.



other Swim Spa models also available

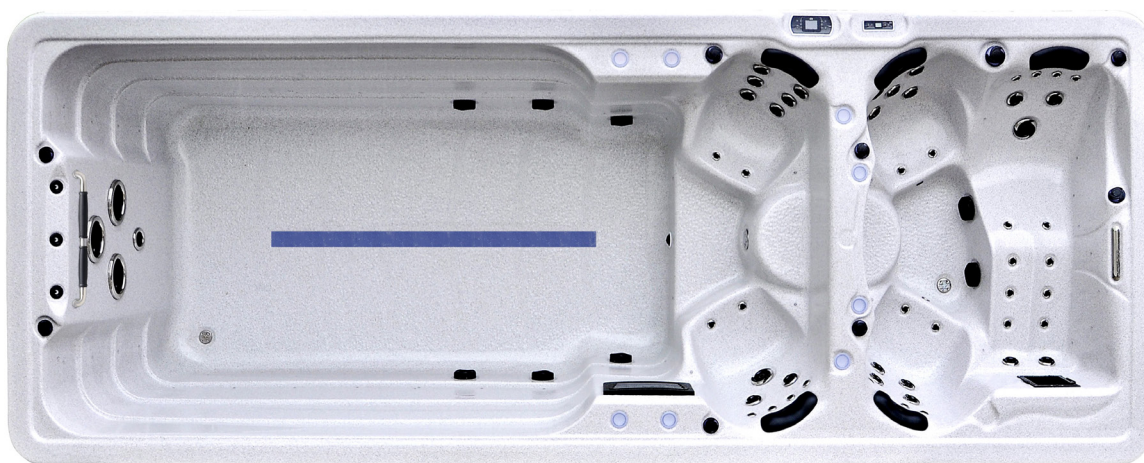




# MODEL PR 1 1 SWIM SPA

## Technical Specifications

Dimensions (Total)		Swim Zone	
Dimensions (Total)	5.85 x 2.25 x 1.47m	Heater	3 KW
Seats	5 (1 Lounger)	Control System	Gecko YE5 in. K506
Weight / Water Capacity	1500 Kilos / 9600 litres	Hydrotherapy Jets	21
Shell / Structure	Aristech / Steel Framed	Circulation Pump	1 x 1 HP
Electrics	45A / 240v	Massage Pump	4 x 2 HP
Spa Zone		Lighting (7 Colour Changing)	1 Under Water & 48 Surface LED's
Heater	3 KW	Rainbow Fountains	3
Control System	Gecko YE5 in. K506	Swim Band & Pole	1 Set
Hydrotherapy Jets	39	Cup Holders with LED's	8
Circulation Pump	1 x 0.35 HP	Swim Handrail	Stainless Steel
Massage Pump	1 x 3HP	Pillows (Total)	5
Lighting (7 Colour Changing)	1 Under Water & 27 Surface LED's	Cover & Step	3 Covers & 1 Step
Waterfall	2 LED Lit		





## **CONTACT INFORMATION**

Princess Spas Ltd,  
Unit 26, Swannington Road,  
Cottage Lane Industrial Estate,  
Broughton Astley,  
Leicester LE9 6TU

Tel: 01409 221595

Email: [enquiries@princessspas.co.uk](mailto:enquiries@princessspas.co.uk)